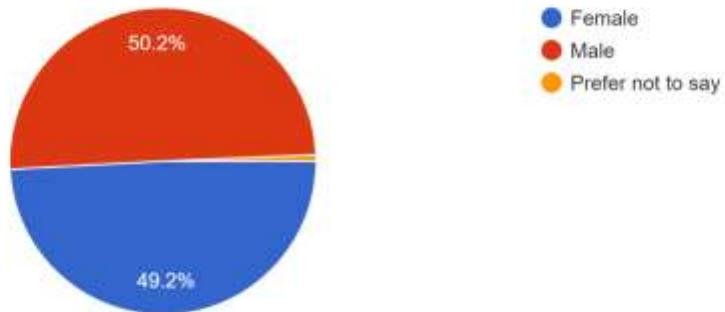


STUDENT SATISFACTION SURVEY 2019-20
GOLAGHAT COMMERCE COLLEGE

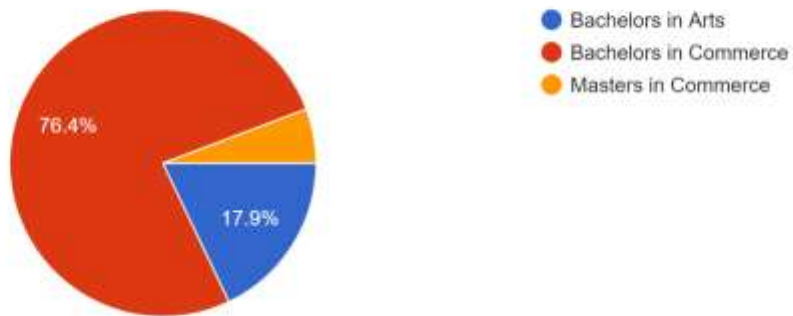
Gender

295 responses



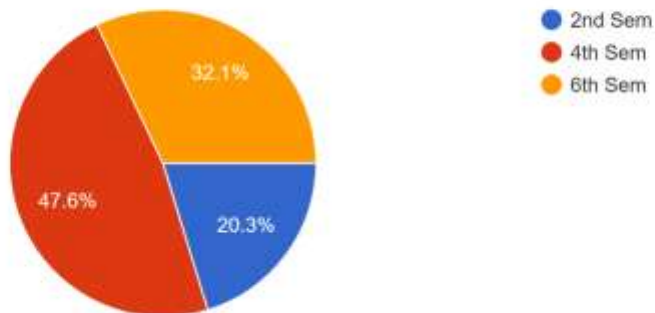
What degree program are you pursuing now?

296 responses



Semester

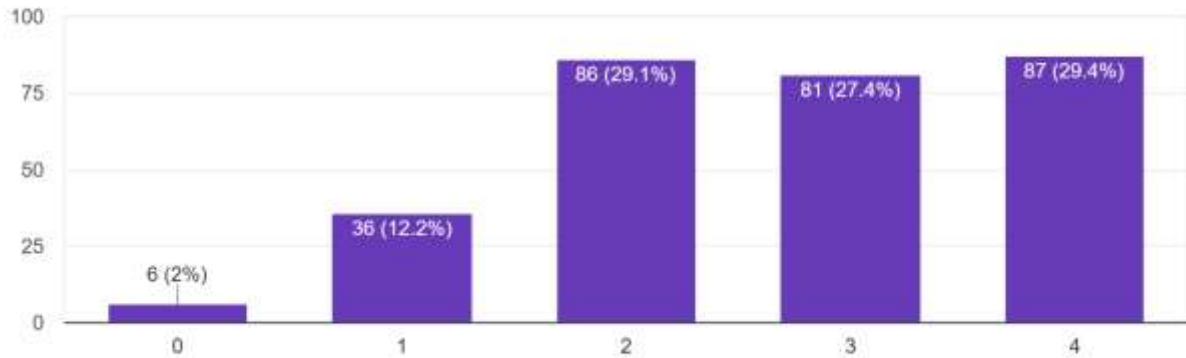
296 responses



STUDENT SATISFACTION SURVEY 2019-20
GOLAGHAT COMMERCE COLLEGE

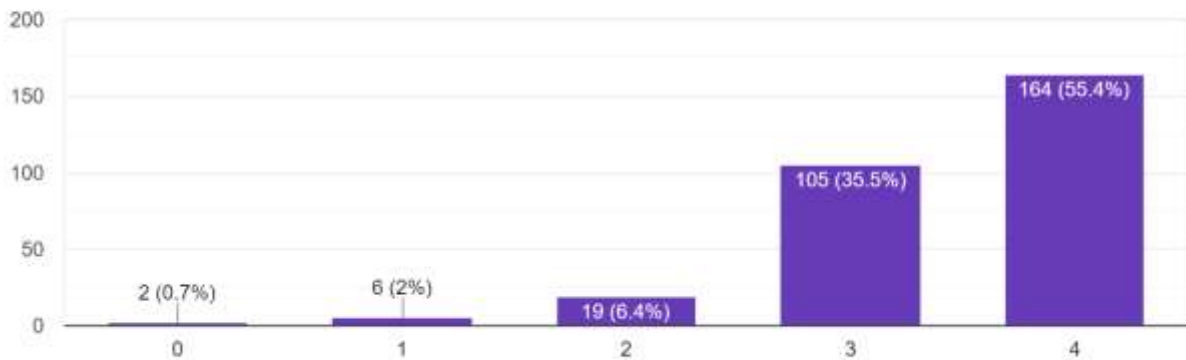
How much of the syllabus was covered in the class? 4 – 85 to 100%, 3 – 70 to 84%, 2 – 55 to 69%, 1– 30 to 54%, 0 –Below 30%

296 responses



How well did the teachers prepare for the classes? 4 –Thoroughly, 3 – Satisfactorily, 2 – Poorly, 1 – Indifferently, 0 – Won't teach at all

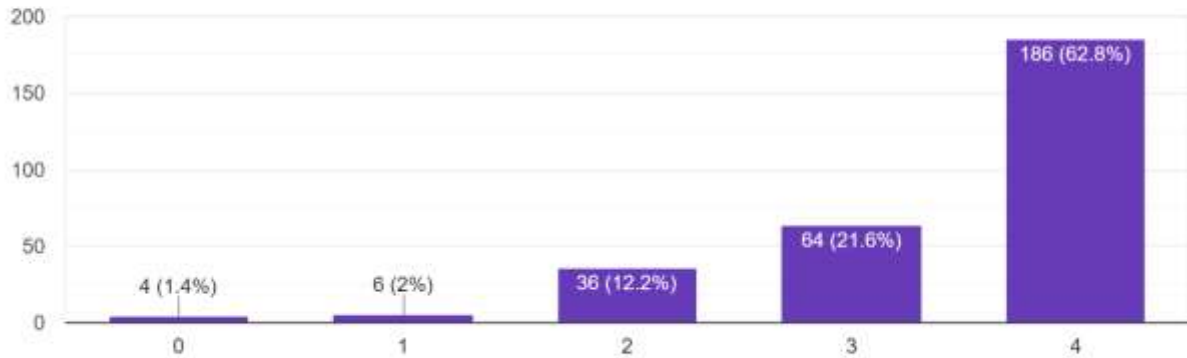
296 responses



STUDENT SATISFACTION SURVEY 2019-20
GOLAGHAT COMMERCE COLLEGE

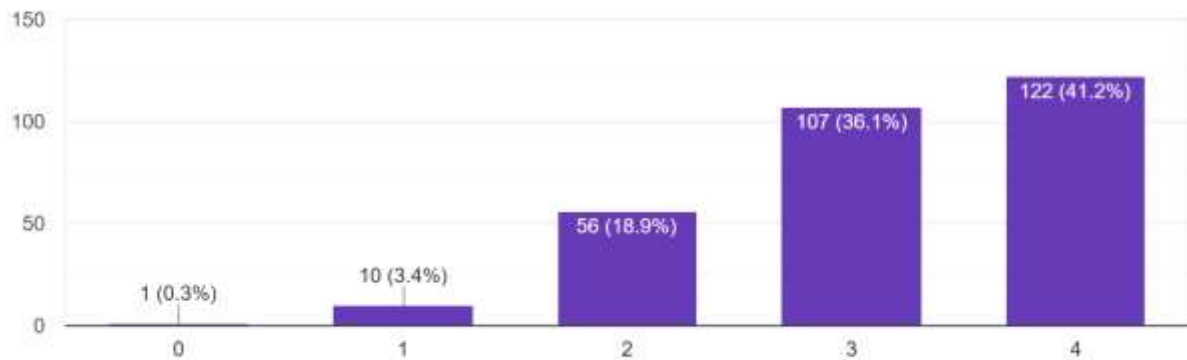
How well were the teachers able to communicate? 4 – Always effective, 3 – Sometimes effective, 2 – Just satisfactorily, 1– Generally ineffective, 0– Very poor communication

296 responses



The teacher's approach to teaching can best be described as 4– Excellent, 3 – Very good, 2 – Good, 1 – Fair, 0– Poor

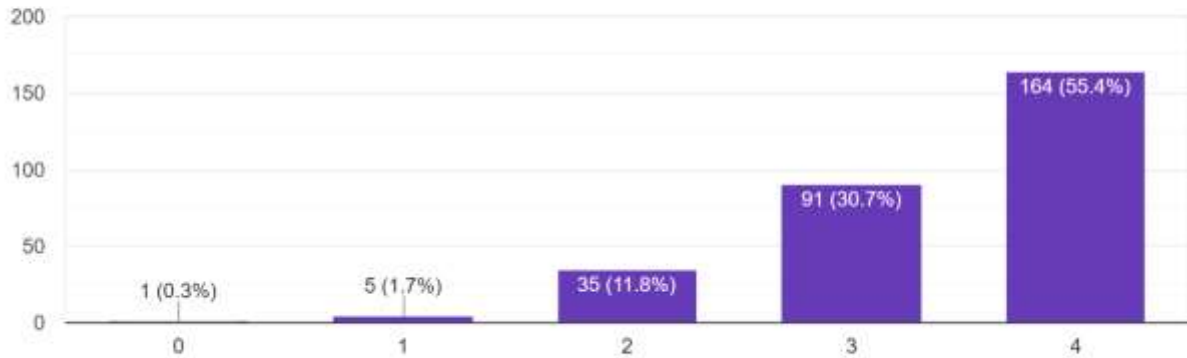
296 responses



STUDENT SATISFACTION SURVEY 2019-20
GOLAGHAT COMMERCE COLLEGE

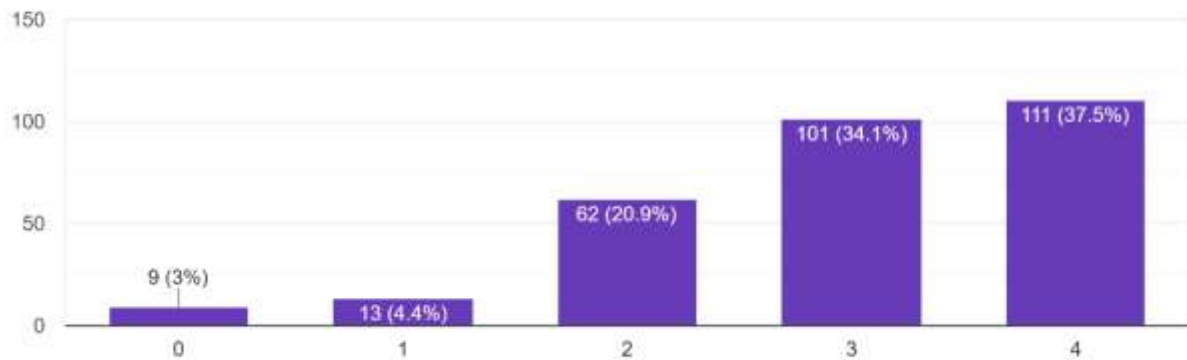
Fairness of the internal evaluation process by the teachers. 4 – Always fair, 3 – Usually fair, 2 – Sometimes unfair, 1 – Usually unfair, 0– Unfair

296 responses



Was your performance in assignments discussed with you? 4 – Every time, 3 – Usually, 2 – Occasionally/Sometimes, 1 – Rarely, 0– Never

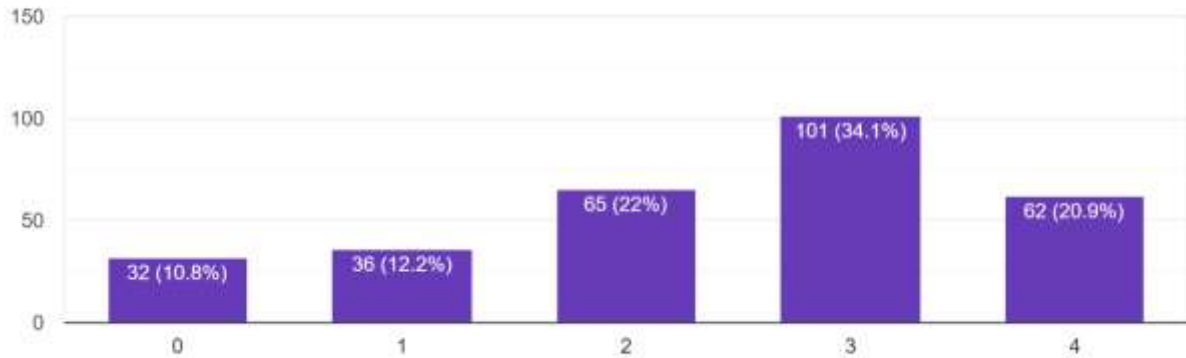
296 responses



STUDENT SATISFACTION SURVEY 2019-20
GOLAGHAT COMMERCE COLLEGE

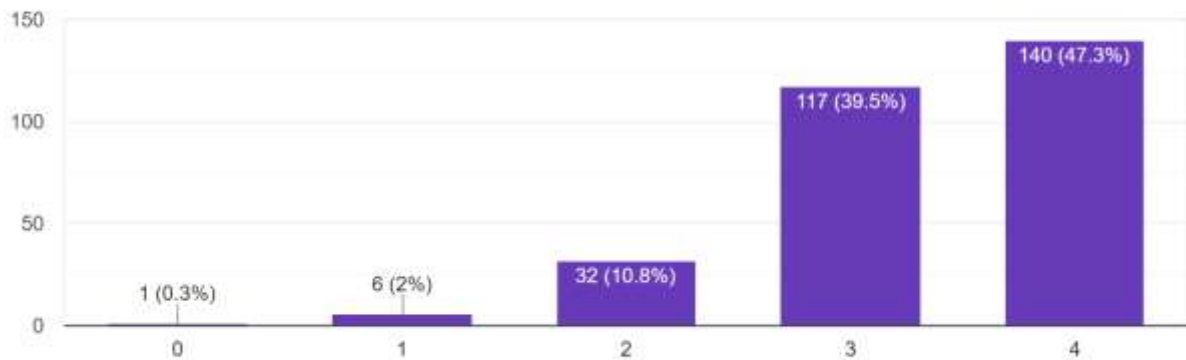
What percentage of teachers use ICT tools such as LCD projector, Multimedia, etc. while teaching.
4 – Above 90%, 3 – 70 – 89%, 2 – 50 – 69%, 1 – 30 – 49%, 0 – Below 29%

296 responses



The overall quality of teaching-learning process in the College is very good. 4 –Strongly agree, 3 – Agree, 2 – Neutral, 1 – Disagree, 0 – Strongly disagree

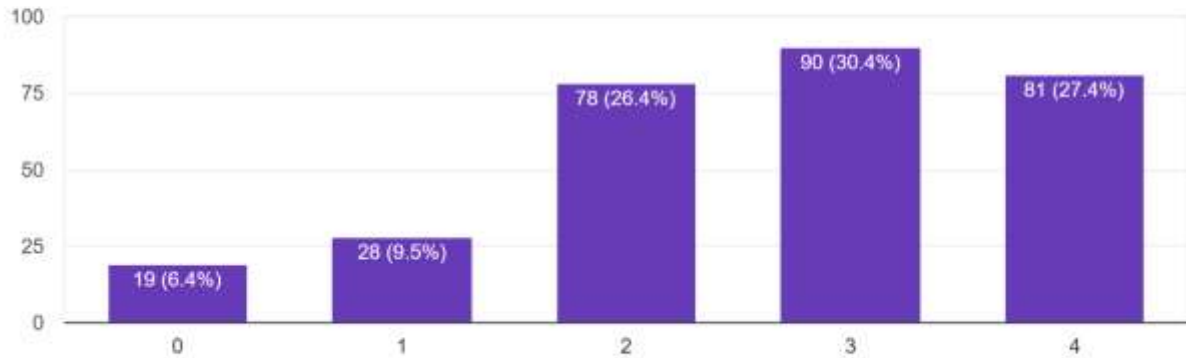
296 responses



STUDENT SATISFACTION SURVEY 2019-20
GOLAGHAT COMMERCE COLLEGE

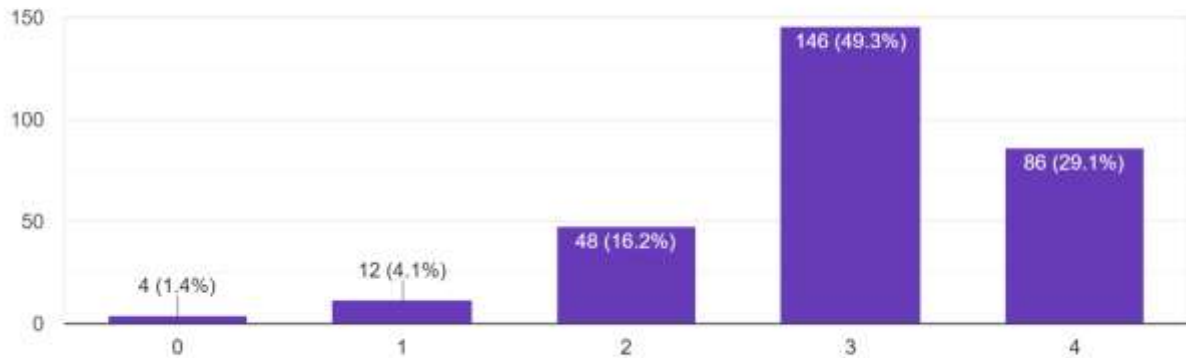
The College takes active interest in promoting internship, student exchange, field visit opportunities for students. 4 – Regularly, 3 – Often, 2 – Sometimes, 1 – Rarely, 0– Never

296 responses



The teaching and mentoring process in the College facilitates you in cognitive, social and emotional growth. 4 – Significantly, 3 – Very well, 2 – Moderately, 1 – Marginally, 0– Not at all

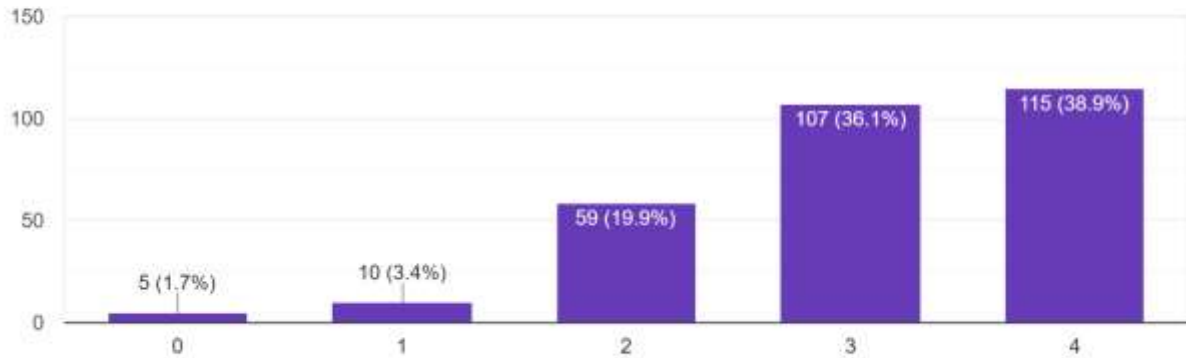
296 responses



STUDENT SATISFACTION SURVEY 2019-20
GOLAGHAT COMMERCE COLLEGE

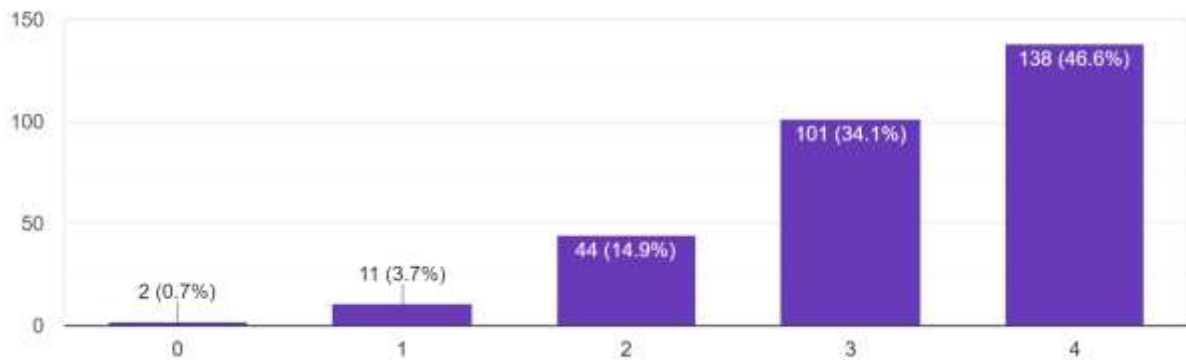
The College provides multiple opportunities to learn and grow. 4 – Strongly agree, 3 – Agree, 2 – Neutral, 1 – Disagree, 0– Strongly disagree

296 responses



Teachers inform you about your expected competencies, course outcomes and programme outcomes. 4 – Every time, 3 – Usually, 2 – Occasionally/Sometimes, 1 – Rarely, 0– Never

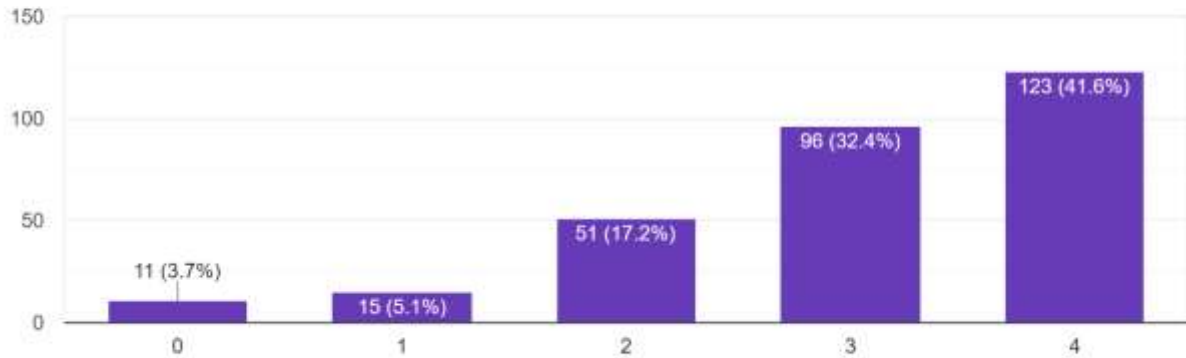
296 responses



STUDENT SATISFACTION SURVEY 2019-20
GOLAGHAT COMMERCE COLLEGE

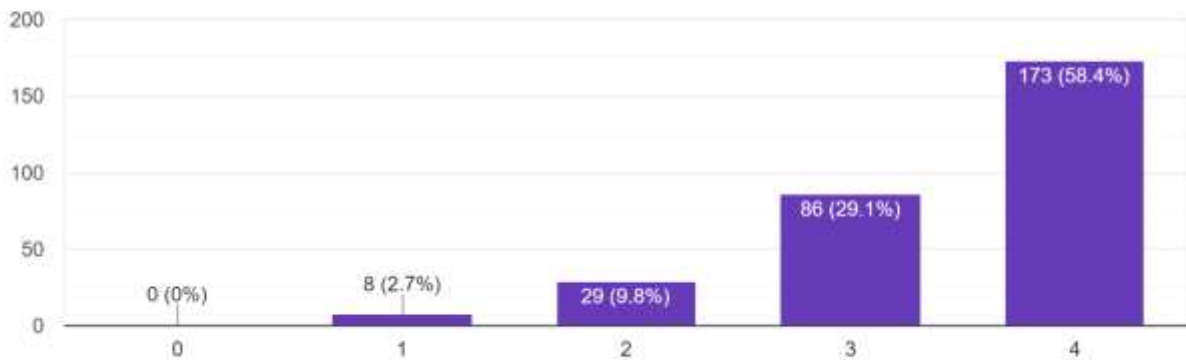
Your mentor does a necessary follow-up with an assigned task to you. 4 – Every time, 3 – Usually, 2 – Occasionally/Sometimes, 1 – Rarely, 0 – I don't have a mentor

296 responses



The teachers illustrate the concepts through examples and applications. 4 – Every time, 3 – Usually, 2 – Occasionally/Sometimes, 1 – Rarely, 0 – Never

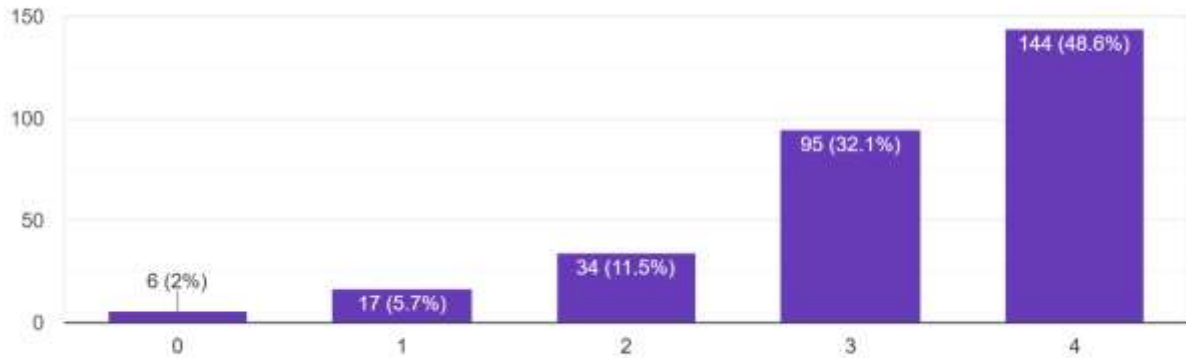
296 responses



STUDENT SATISFACTION SURVEY 2019-20
GOLAGHAT COMMERCE COLLEGE

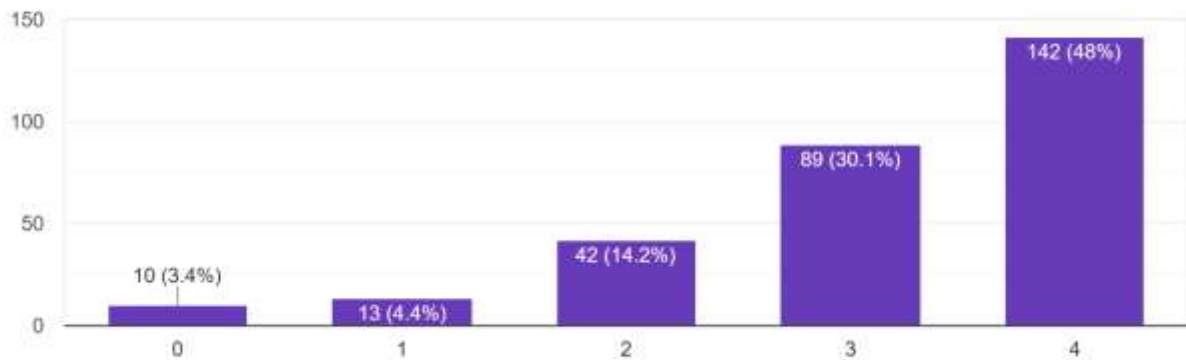
The teachers identify your strengths and encourage you with providing right level of challenges. 4 – Fully, 3 – Reasonably, 2 – Partially, 1 – Slightly, 0 – Unable

296 responses



Teachers are able to identify your weaknesses and help you to overcome them. 4 – Every time, 3 – Usually, 2 – Occasionally/Sometimes, 1 – Rarely, 0 – Never

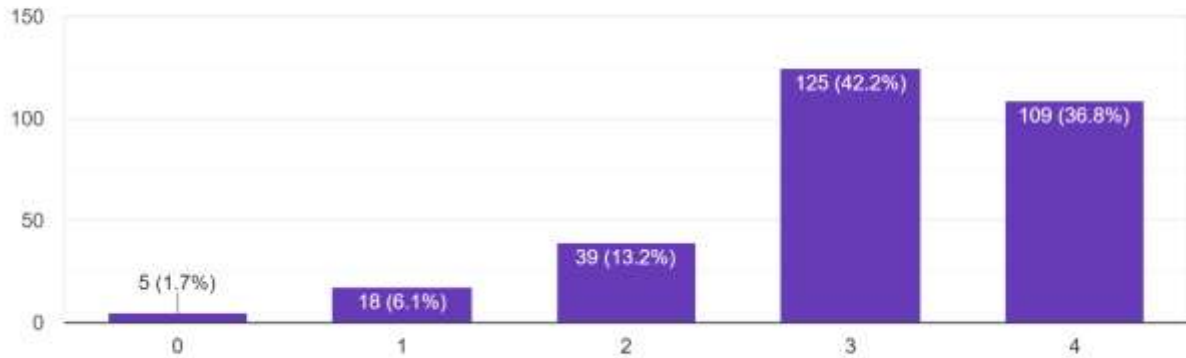
296 responses



STUDENT SATISFACTION SURVEY 2019-20
GOLAGHAT COMMERCE COLLEGE

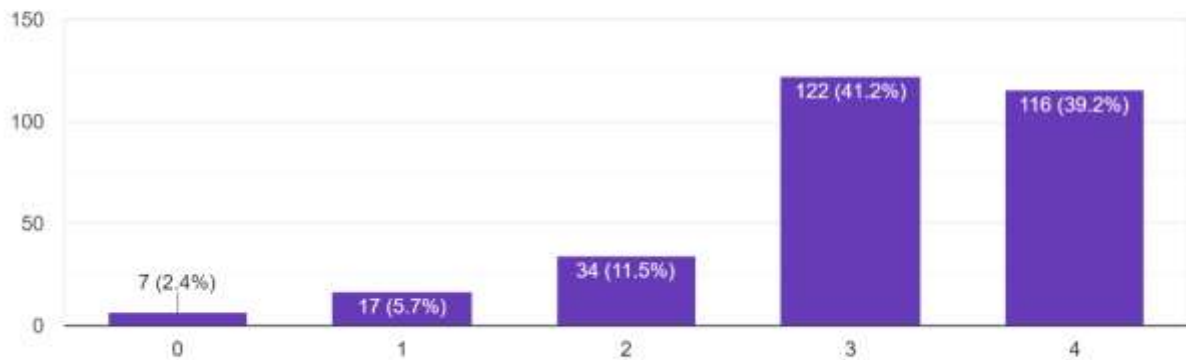
The institution makes effort to engage students in the monitoring, review and continuous quality improvement of the teaching learning process. 4 – Strongly agree, 2 – Neutral, 1 – Disagree, 0 – Strongly disagree

296 responses



The institute/ teachers use student centric methods, such as experiential learning, participative learning and problem solving methodologies for enhancement. 2 – Some what, 1 – Very little, 0 – Not at all

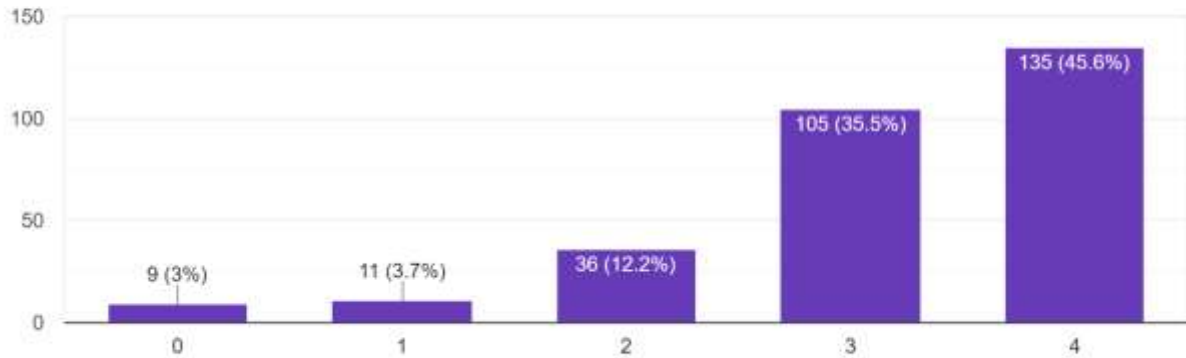
296 responses



STUDENT SATISFACTION SURVEY 2019-20
GOLAGHAT COMMERCE COLLEGE

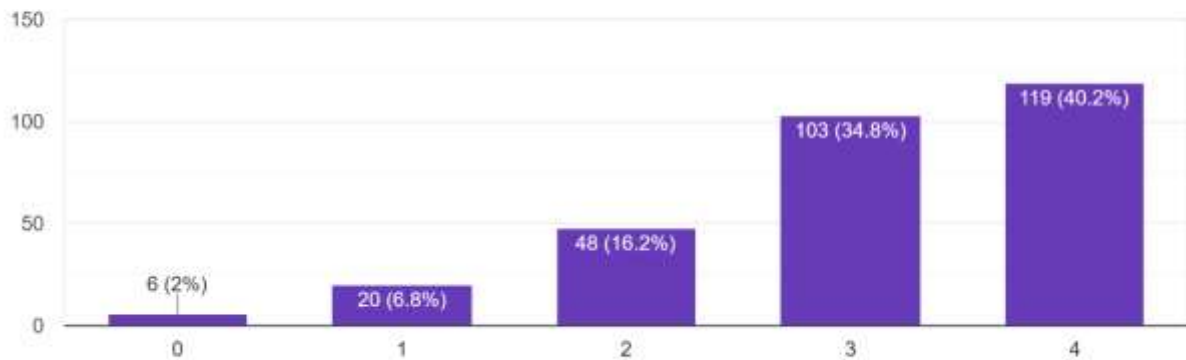
Teachers encourage you to participate in extracurricular activities. 4 – Strongly agree, 3 – Agree, 2 – Neutral, 1 – Disagree, 0 – Strongly disagree

296 responses



Efforts are made by the institute/ teachers to inculcate soft skills, life skills and employability skills to make you ready for the world of work. 4 – To a gre...rate, 2 – Some what, 1 – Very little, 0 – Not at all

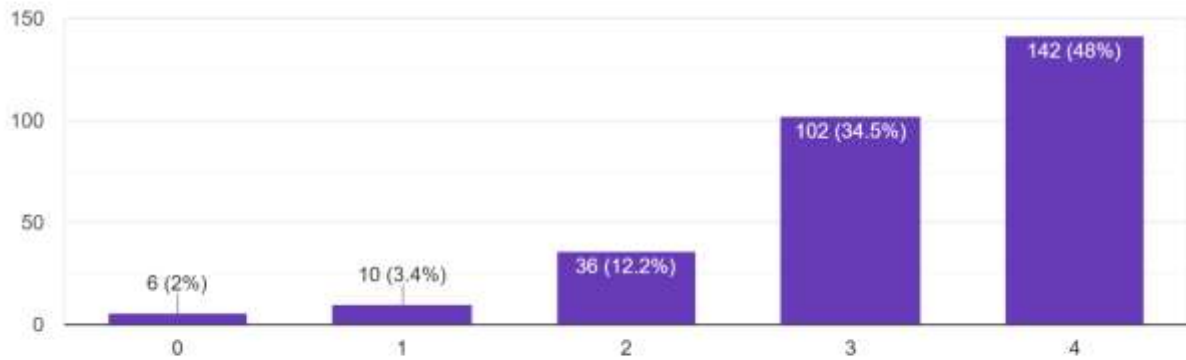
296 responses



STUDENT SATISFACTION SURVEY 2019-20
GOLAGHAT COMMERCE COLLEGE

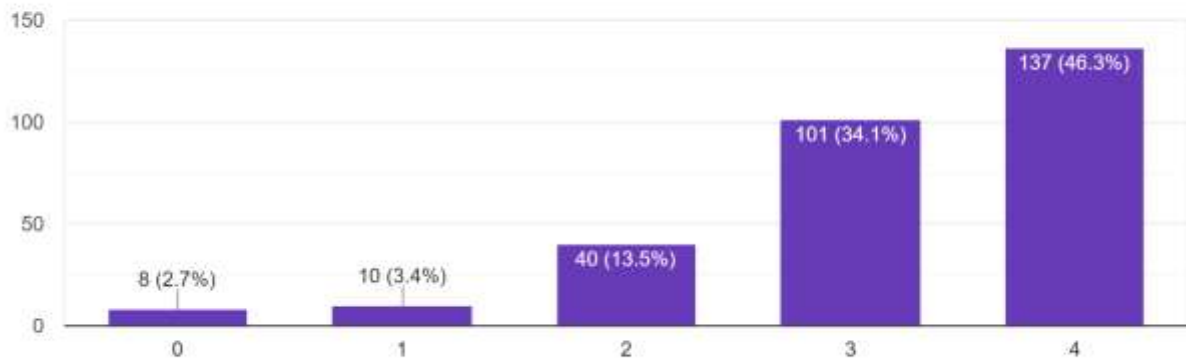
The online classes materials were useful and accurate

296 responses



The technology adopted was appropriate for online class

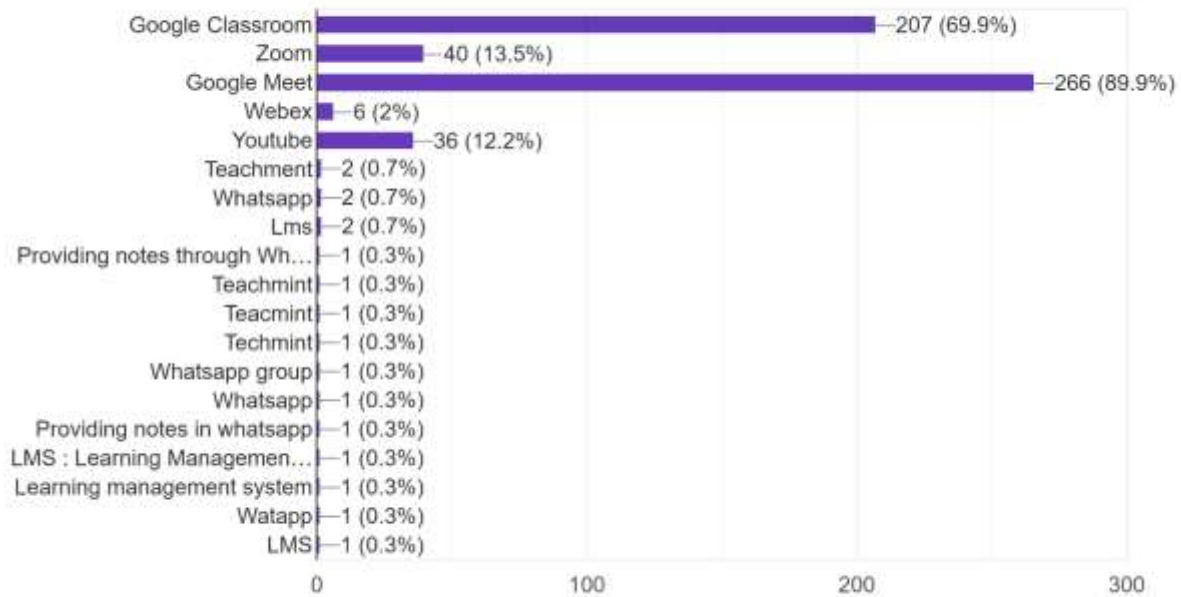
296 responses



STUDENT SATISFACTION SURVEY 2019-20
GOLAGHAT COMMERCE COLLEGE

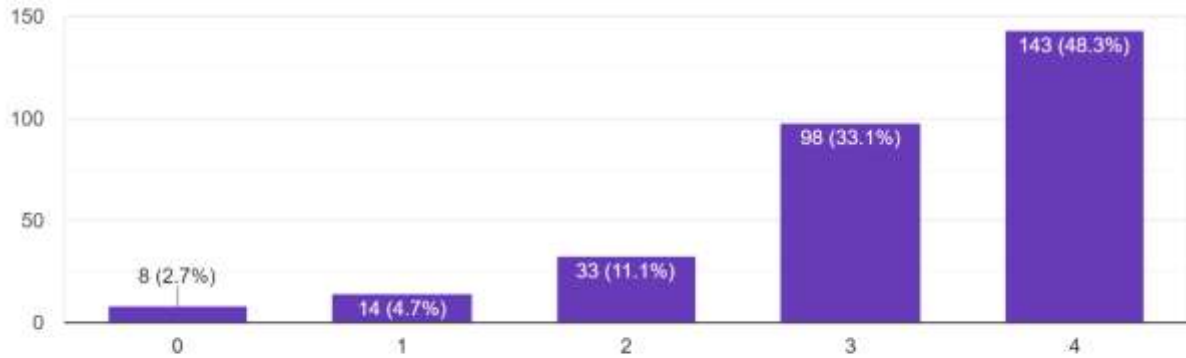
What were the online teaching tools used by the teacher?

296 responses



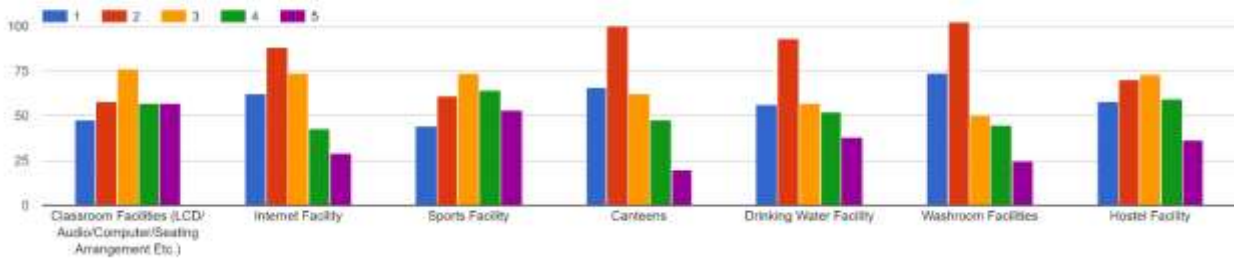
Are you satisfied with the content delivery during online classes?

296 responses



STUDENT SATISFACTION SURVEY 2019-20 GOLAGHAT COMMERCE COLLEGE

For each question/statement, please give your level of Experience against the statement from a score between 1 and 5. A higher score indicates a better experience. 1-Below Average, 2-Average, 3-Good, 4-Very Good, 5-Excellent



For each question/statement, please give your level of Experience against the statement from a score between 1 and 5. A higher score indicates a better experience. 1...low Average, 2-Average, 3-Good, 4-Very Good, 5-Excellent

